



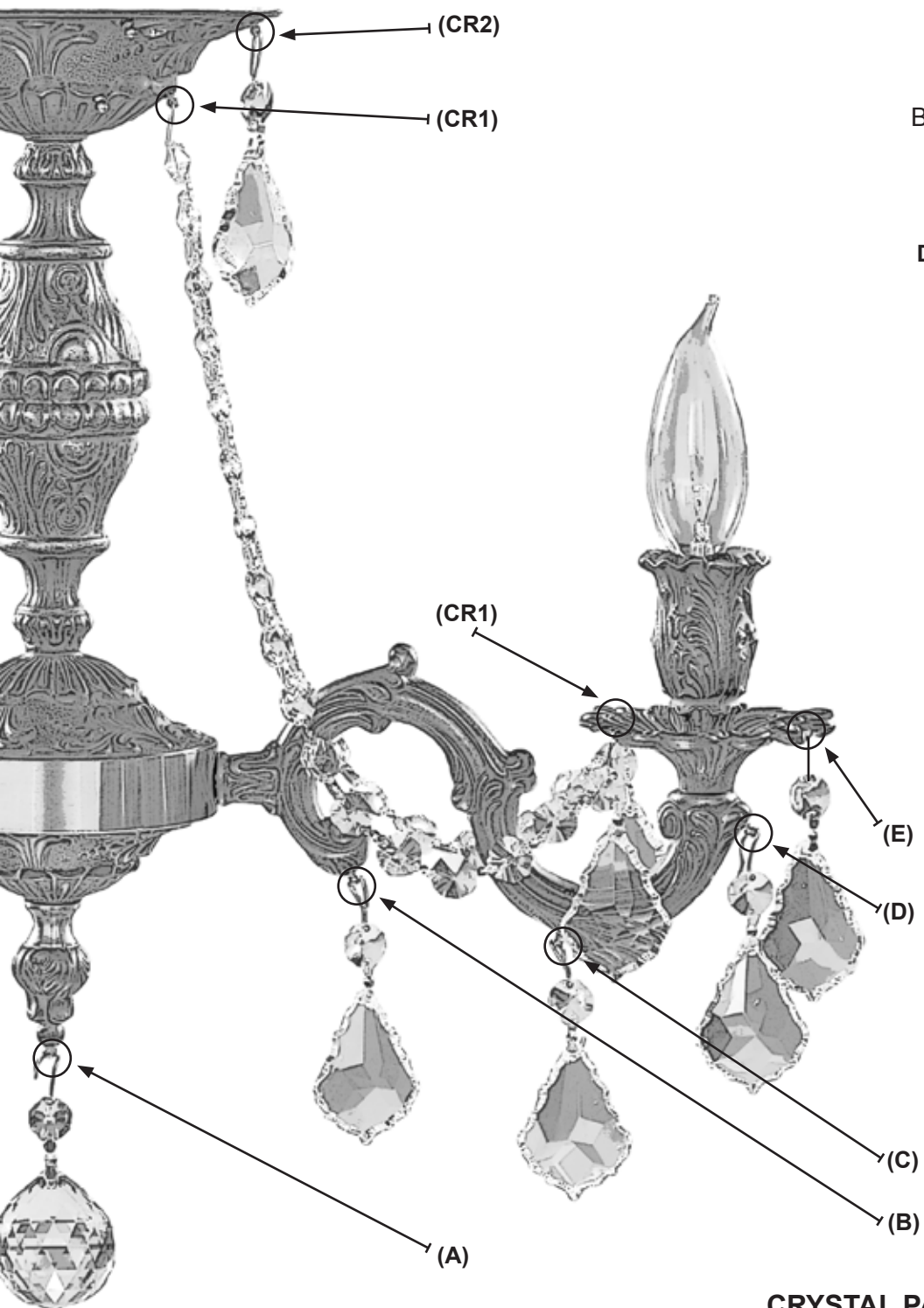
FM-9203



American Brass & Crystal

835 Lehigh Avenue
Union, N.J. 07083
Toll Free (877) 465-5617

www.abclighting.net



CRYSTAL TRIMMING DIRECTIONS:

Begin trimming chandelier after all the electrical connections have been made, the lights have been tested and the chandelier is in good working order.

Begin dressing Alphabetically

Do not unwrap the next crystal section until the proceeding section is complete

Step 1: Package (A) Attach the ball to the (finial).

Step 2: Package (B) Attach the (6) crystal sections to the (back of arms)

Open package labeled "B" Attach each crystal section using the long thin pin. Leave the loose chain of crystal to hang unattached until all crystal sections are attached to the frame.

Once all sections are attached begin connecting the loose chain of crystal to the 4 hole octagon on the crystal section to the right. **(Example 1)**

Step 3: Package (C) use the same directions as in step 2 (middle of arm)

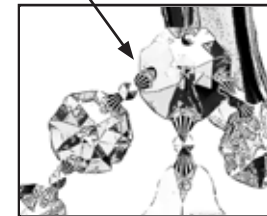
Step 4: Package (D) use the same directions as in step 2 (front tip of arm)

Step 5: Package (E) Attach the (2) crystals to each (front bobèche)

Step 7: Package (CP1) Locate the holes on the (top canopy-drape down) and attach each crystal to both back holes on (bobèche).

Step 8: Package (CP2) Attach the crystals to top holes on (canopy).

(Example 1)



CRYSTAL PACKAGE _____ PIN COLOR _____ INITIALS _____